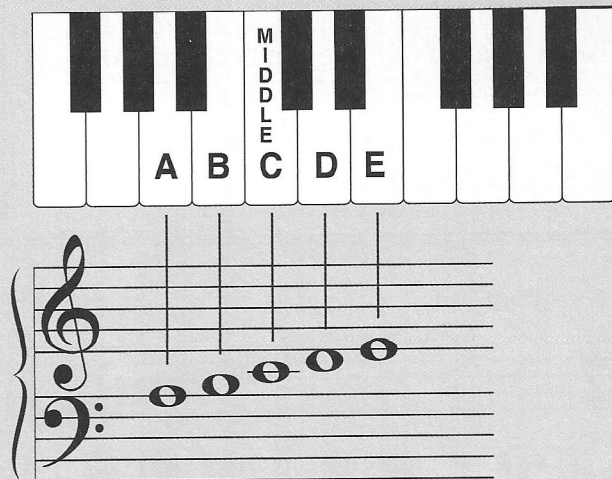


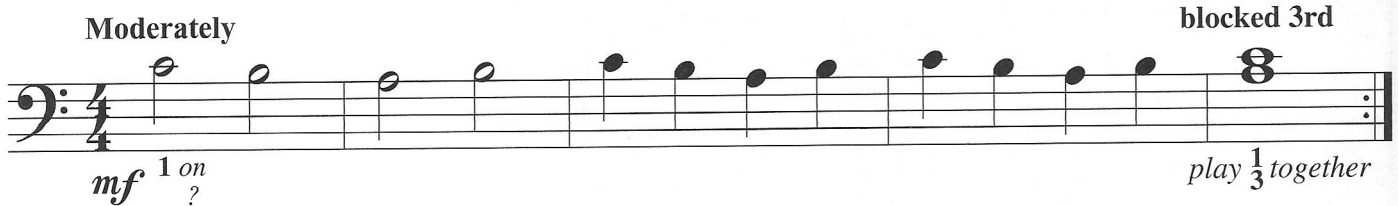
Bass Clef Note - A

This A is the top line of the bass staff.
It is a **2nd** below B.



• Play and say: **A B C D E**
line-space-line-space-line

L.H. Warm-up



Repeat beginning with L.H. finger 2 on C.

- Tap (or clap) the rhythm. Count aloud, "1-2-3-4."
- Look through the piece, noting the *form*: A A B B A¹
- Play, observing the *f*, *p*, and > marks.

Russian Folk Song

Traditional Russian
arranged

With spirit

A 3 on ___?
1 on ___?

3 on ___?

4 **A** (Measures 1–3 are repeated.)

7 **B**

10 **B** (Measures 7–9 are repeated.)

13 **A¹** (Measures 1–3 return, altered for the ending.)



Transpose this piece using this set of keys.

Hand Placement

L.H. R.H.

D	E	F	G	A
3	2	1	2	3

Teacher Duet: (Student plays 1 octave higher)