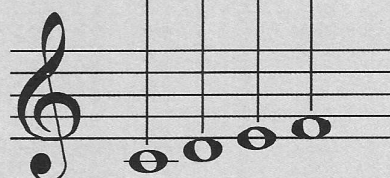
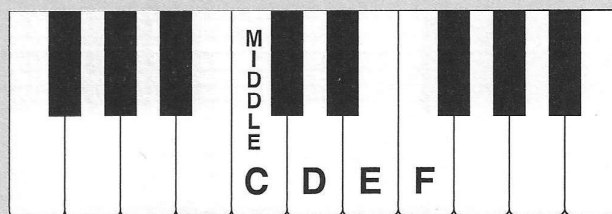


## Treble Clef Note - F

This **F** is the first space of the treble staff.  
It is a **2nd** above E.



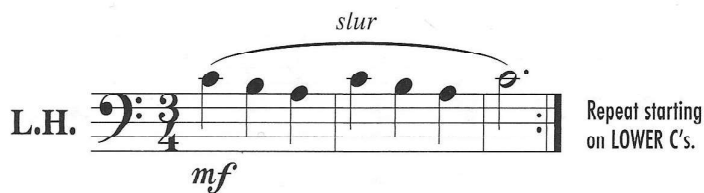
Play and say: **C D E F**  
line-space-line-space

## Legato

**Legato** means smooth and connected, with no break in the sound. To play *legato*, one finger goes down as the previous finger releases.

A **slur** is a curved line over or under a group of notes. It indicates *legato*.

- Play this example. Listen for a smooth, connected sound.



- Tap (or clap) the rhythm. Count aloud, "1-2-3."

- Repeat, tapping only on beat 1 of each measure.

## Midnight Ride

**Fast, urgent**

1 on \_\_\_?

2 on \_\_\_?

5

9

13

17



Can you play this piece counting aloud, “1-2-3” for each measure?  
Which beat is the strongest? **beat 1** **beat 2** **beat 3** (circle one)

Teacher Duet: (Student plays 1 octave higher)