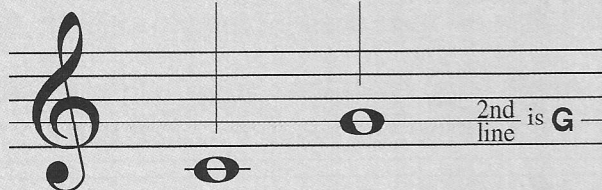
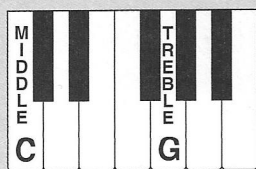




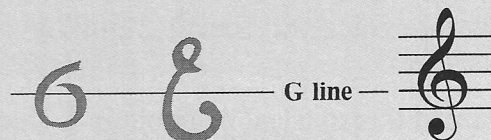
Reading Reinforcement

Treble Clef Note - G

Find the first G above Middle C.
This is called **Treble Clef G**.



The treble clef is also called the **G clef** because it circles around the **G line** on the staff. The treble clef came from the old letter G shown below.



Hand Shape Warm-up

- With R.H. fingers 1 and 5, play back and forth between Middle C and Treble Clef G. (This is the interval of a 5th.)

- A monk singing this piece would take a breath at the end of each slur.
- As you play this piece, let the music “breathe” by lifting your wrist at the end of each slur.

Chant of the Monk

Rather slowly, floating

1 lift 2 4 lift

Al - le - lu - ia, Al - le - lu - ia.

f-p on repeat



This piece uses notes of the **C pentascale** moving by *2nds*. (See p. 22)
Transpose to the **G pentascale**. (See pp. 25 or 176)

Teacher Duet: (Student plays *as written* for page 42; *1 octave higher* for page 43)

R.H. 1 2 5

L.H. 5 4 2

f-p on repeat