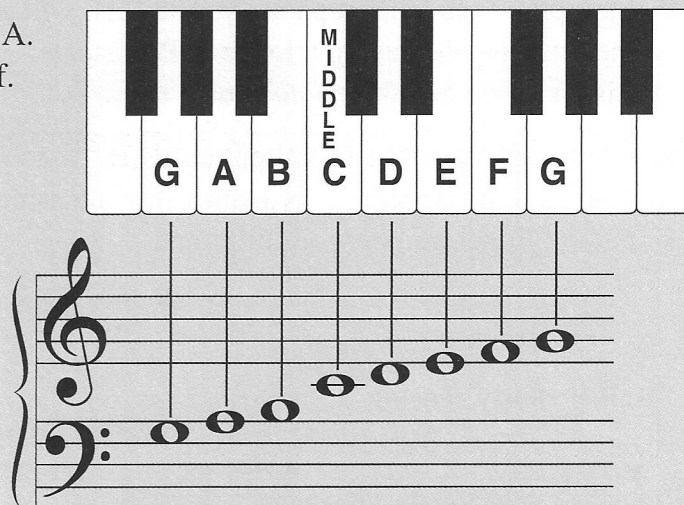


Bass Clef Note - G

This **G** in the bass clef is a 2nd (step) *below* A. It is located on the top space of the bass staff.

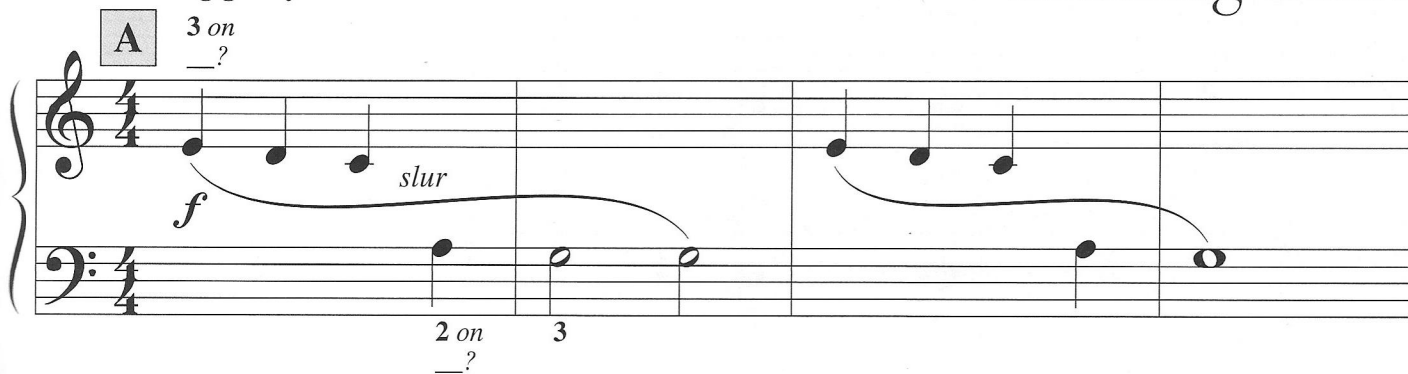


Play and say: **G A B C D E F G**
space-line-space-line-space-line-space-line

- Before playing, scan the music and observe the musical form.

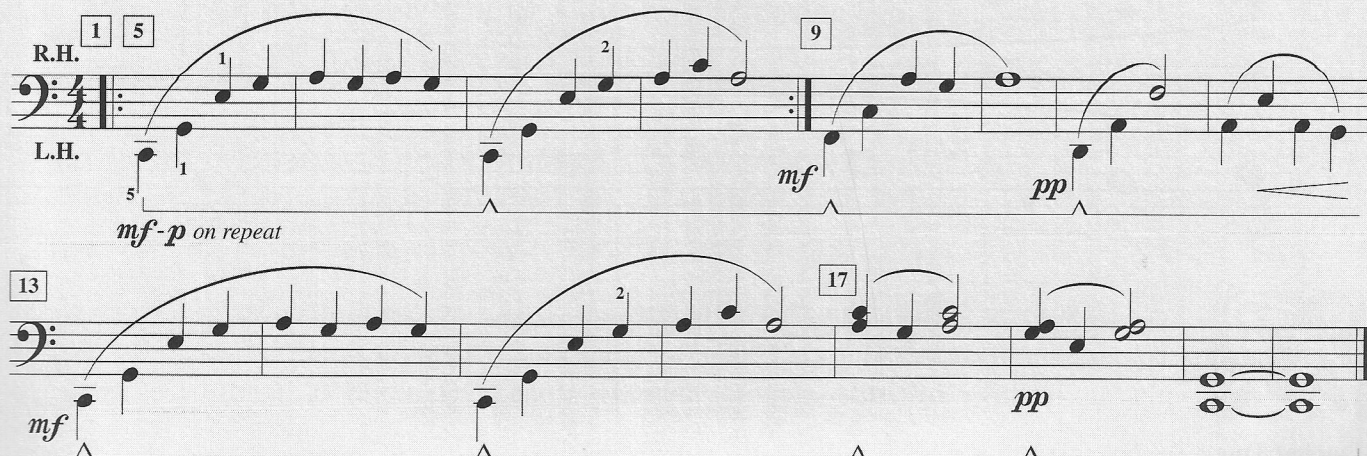
Shining Stars

Moving gently



Damper pedal down.

Teacher Duet: (Student plays 1 octave higher, without pedal)



5 **A**

p (echo)

9 **B**

f *p*

play $\frac{3}{1}$ together

play $\frac{2}{3}$ together

13 **A¹**

f

17 **Coda** (ending section)

f *p*

Play both hands together. as soft as possible

$\frac{3}{1}$ $\frac{2}{3}$

BOTH HANDS *lift* **BOTH HANDS** *lift*

8^{va} 15^{ma} (2 octaves higher)

Pedal up.



Point out a **broken 2nd**, **blocked 2nd**, then a **blocked 3rd**.
(Find a broken 3rd in *measure 1*. Look between treble and bass notes.)