
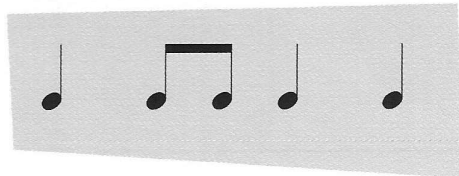


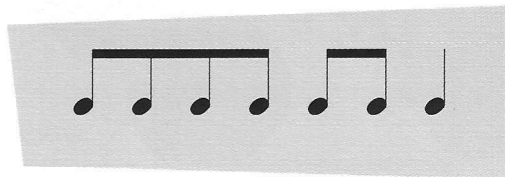
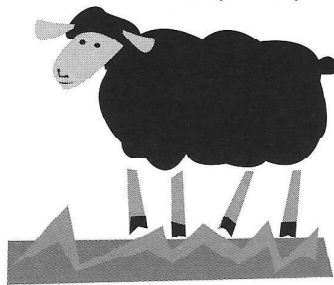
# Famous Rhymes with 8th Notes

- Say each Famous Rhyme aloud. Feel its natural rhythm.
  - Next, **tap** the Famous Rhyme as you say the words.
  - Now draw a line from each Famous Rhyme to the rhythm that matches. 

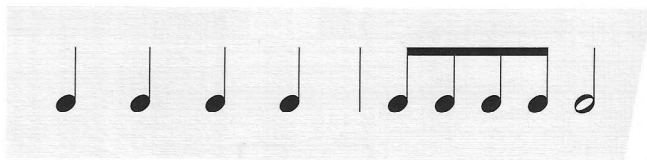
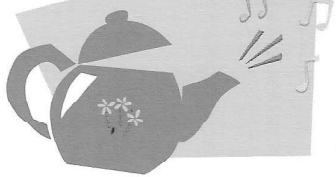
Wee Willie Winkie



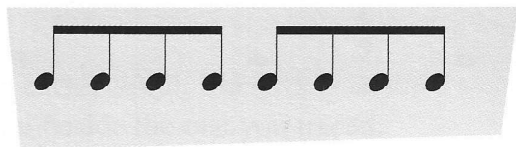
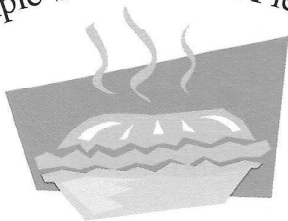
Baa, Baa, Black Sheep,  
Have You  
Any Wool?



Polly, Put the Kettle On!



Simple Simon Met a Pieman



- Now copy **each rhythm** with your pencil. (Write it above each color box.) 