

The Staff

This is a staff. A staff has **5 LINES** and **4 SPACES**.



1. Point to each **line** with a pencil and say its number aloud. Then do the same with each **space**.

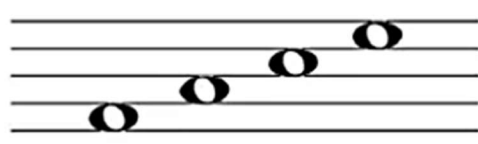
Line Notes


The line passes through the center of the note.



Space Notes

The note fills up the space on the staff.

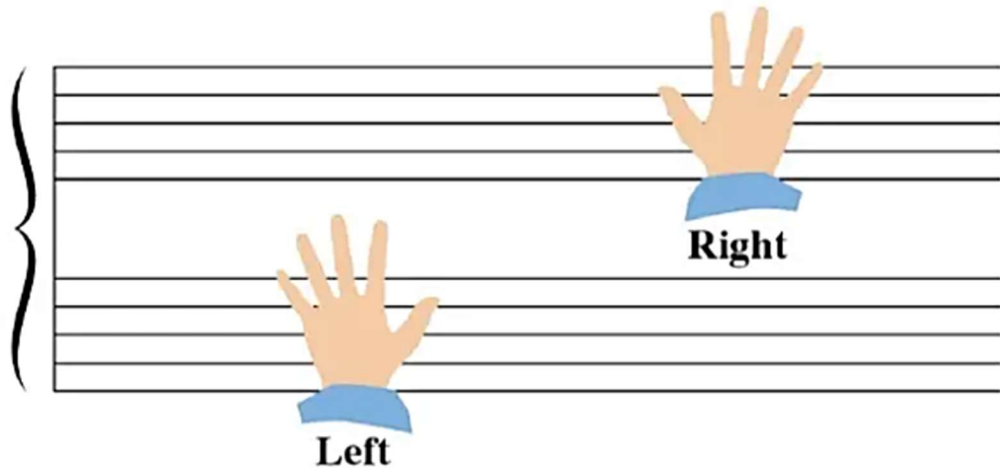


2. As your teacher says “line note” or “space note,” shade in a note above to match. 

The Grand Staff

Piano music uses 2 staves. Together we call them the **GRAND STAFF**.

The Left Hand uses the bottom staff.



The Right Hand uses the top staff.