

## minor Triads in Groups

going from Major to minor: flat the middle note

c minor



f minor

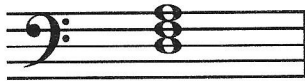


g minor



going from Major to minor: take away the sharp

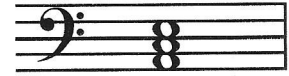
d minor



e minor

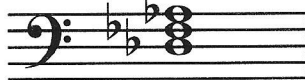


a minor

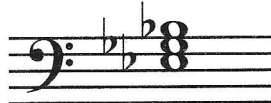


going from Major to minor: flat the middle note

db minor



eb minor



ab minor



going from Major to minor:  
flat the middle note

bb minor

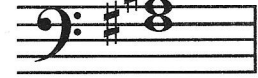


going from Major to minor: take away the middle sharp

c# minor



f# minor



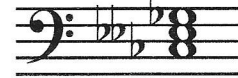
going from Major to minor:  
take away the middle sharp

b minor



going from Major to minor: double-flat the middle note

cb minor



gb minor

