

# Major Scales in Patterns

(with key signatures)

C Major Scale (CMaj7 CMaj9 C<sup>6</sup> C6 CMaj13)

A musical staff in 4/4 time, treble clef, showing the C Major Scale. The notes are C4, D4, E4, F4, G4, A4, B4, C5, B4, A4, G4, F4, E4, D4, C4.

Pattern 1

A musical staff in 4/4 time, treble clef, showing Pattern 1. The notes are C4, D4, E4, F4, G4, A4, B4, C5, B4, A4, G4, F4, E4, D4, C4.

Pattern 2

A musical staff in 4/4 time, treble clef, showing Pattern 2. The notes are C4, D4, E4, F4, G4, A4, B4, C5, B4, A4, G4, F4, E4, D4, C4.

Pattern 3 (Pattern 1 in triplets)

A musical staff in 4/4 time, treble clef, showing Pattern 3. The notes are C4, D4, E4, F4, G4, A4, B4, C5, B4, A4, G4, F4, E4, D4, C4. Triplet markings (3) are placed above the first four notes of each measure.

Pattern 4 (Pattern 2 in triplets)

A musical staff in 4/4 time, treble clef, showing Pattern 4. The notes are C4, D4, E4, F4, G4, A4, B4, C5, B4, A4, G4, F4, E4, D4, C4. Triplet markings (3) are placed above the first four notes of each measure.

Pattern 5

A musical staff in 4/4 time, treble clef, showing Pattern 5. The notes are C4, D4, E4, F4, G4, A4, B4, C5, B4, A4, G4, F4, E4, D4, C4. Triplet markings (3) are placed above the first four notes of each measure.

Pattern 6

A musical staff in 4/4 time, treble clef, showing Pattern 6. The notes are C4, D4, E4, F4, G4, A4, B4, C5, B4, A4, G4, F4, E4, D4, C4. Triplet markings (3) are placed above the first four notes of each measure.

Pattern 7

A musical staff in 4/4 time, treble clef, showing Pattern 7. The notes are C4, D4, E4, F4, G4, A4, B4, C5, B4, A4, G4, F4, E4, D4, C4.

Pattern 8

A musical staff in 4/4 time, treble clef, showing Pattern 8. The notes are C4, D4, E4, F4, G4, A4, B4, C5, B4, A4, G4, F4, E4, D4, C4.

G Major Scale ( G<sup>Maj7</sup> G<sup>Maj9</sup> G<sup>6</sup><sub>9</sub> G<sup>6</sup> G<sup>Maj13</sup> )

Pattern 1



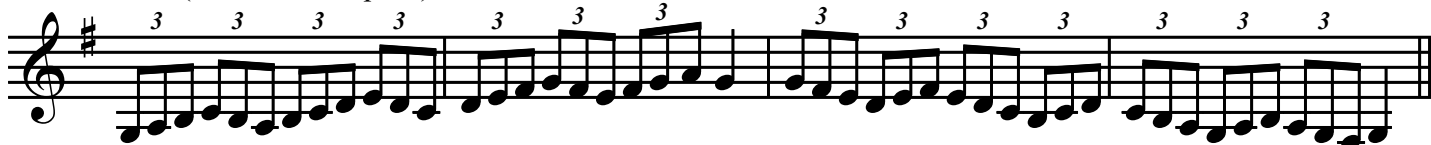
Pattern 2



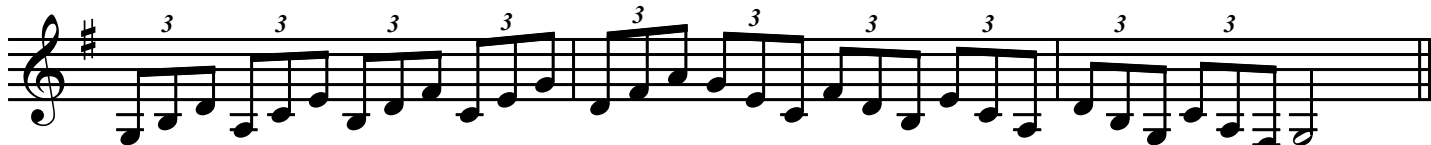
Pattern 3 (Pattern 1 in triplets)



Pattern 4 (Pattern 2 in triplets)



Pattern 5



Pattern 6



Pattern 7



Pattern 8



F Major Scale ( FMaj7 FMaj9 F<sup>6</sup> F6 FMaj13 )



Pattern 1



Pattern 2



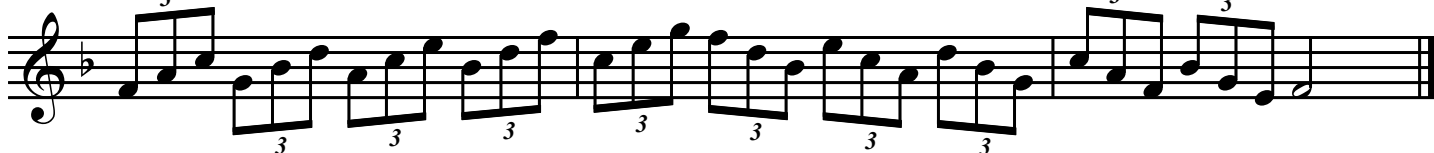
Pattern 3 (Pattern 1 in triplets)



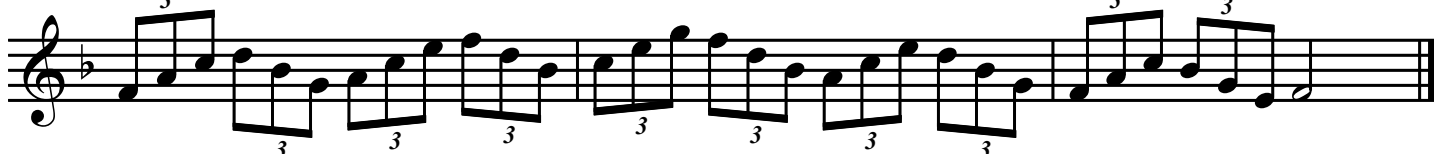
Pattern 4 (Pattern 2 in triplets)



Pattern 5



Pattern 6



Pattern 7



Pattern 8



D Major Scale ( DMaj7 DMaj9 D<sup>6</sup><sub>9</sub> D6 DMaj13 )

Pattern 1



Pattern 2



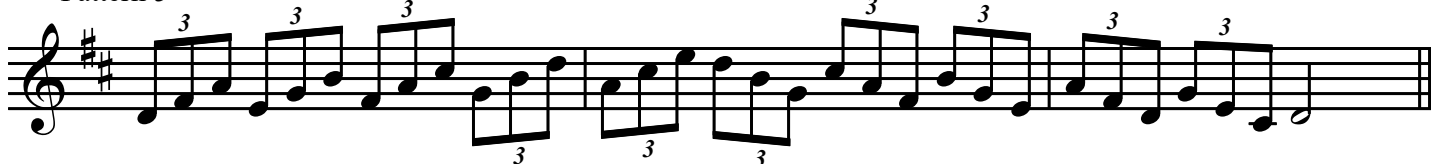
Pattern 3 (Pattern 1 in triplets)



Pattern 4 (Pattern 2 in triplets)



Pattern 5



Pattern 6



Pattern 7



Pattern 8



Bb Major Scale ( BbMaj7 BbMaj9 Bb<sup>6</sup> Bb6 BbMaj13 )



Pattern 1



Pattern 2



Pattern 3 (Pattern 1 in triplets)



Pattern 4 (Pattern 2 in triplets)



Pattern 5



Pattern 6



Pattern 7

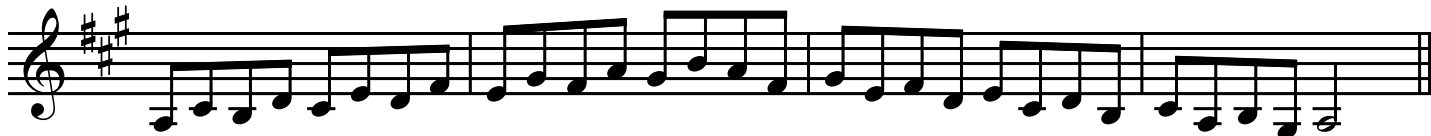


Pattern 8



A Major Scale ( A<sup>Maj7</sup> A<sup>Maj9</sup> A<sup>6</sup> A<sup>6</sup> A<sup>Maj13</sup> )

Pattern 1



Pattern 2



Pattern 3 (Pattern 1 in triplets)



Pattern 4 (Pattern 2 in triplets)



Pattern 5



Pattern 6



Pattern 7



Pattern 8



E $\flat$  Major Scale ( E $\flat$ Maj7 E $\flat$ Maj9 E $\flat$ <sup>6</sup> E $\flat$ 6 E $\flat$ Maj13 )



Pattern 1



Pattern 2



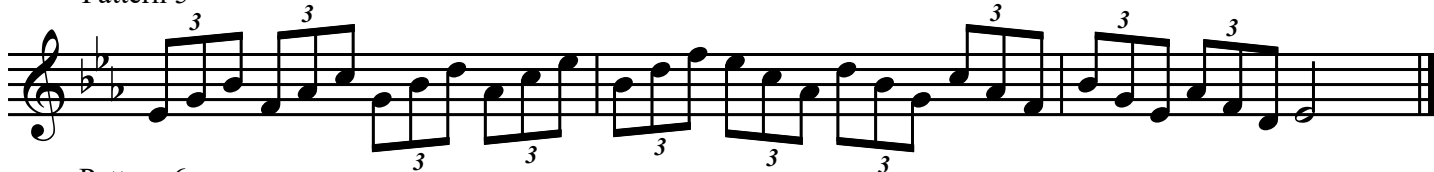
Pattern 3 (Pattern 1 in triplets)



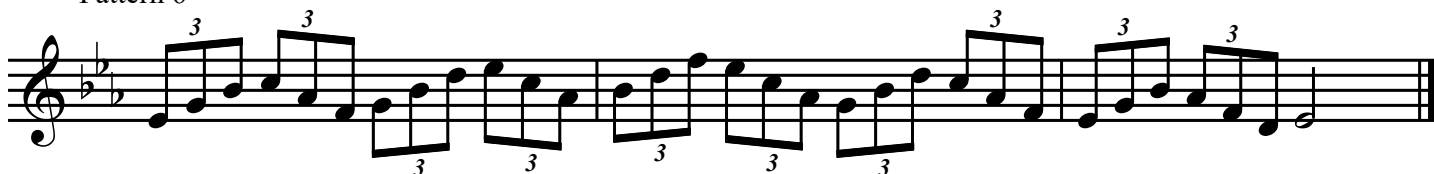
Pattern 4 (Pattern 2 in triplets)



Pattern 5



Pattern 6



Pattern 7



Pattern 8



E Major Scale ( EMaj7 EMaj9 E<sup>6</sup> E6 EMaj13 )

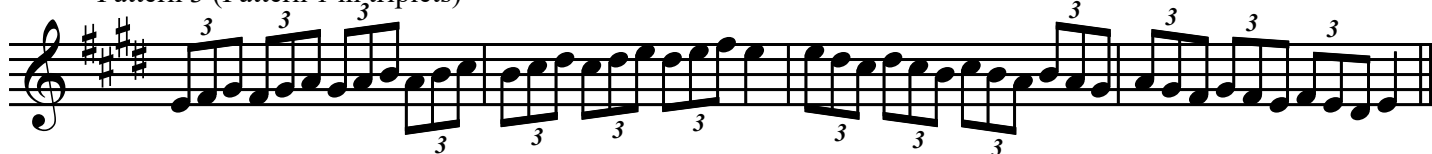
Pattern 1



Pattern 2



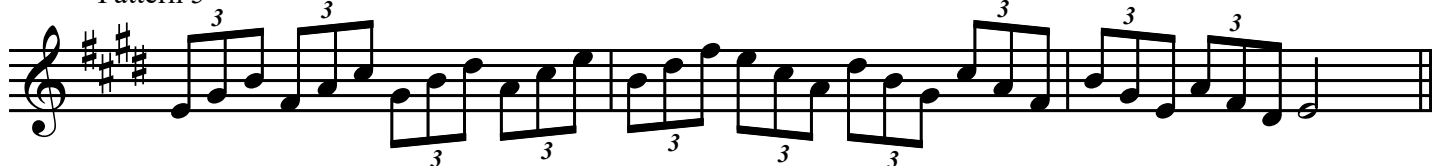
Pattern 3 (Pattern 1 in triplets)



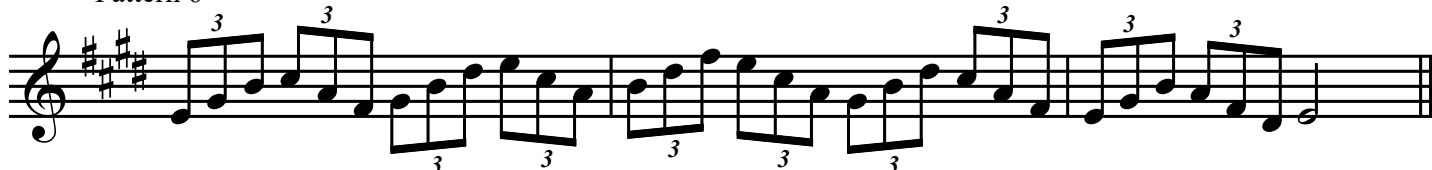
Pattern 4 (Pattern 2 in triplets)



Pattern 5



Pattern 6



Pattern 7



Pattern 8





Ab Major Scale (AbMaj7 AbMaj9 Ab<sup>6</sup> Ab6 AbMaj13 )



Pattern 1



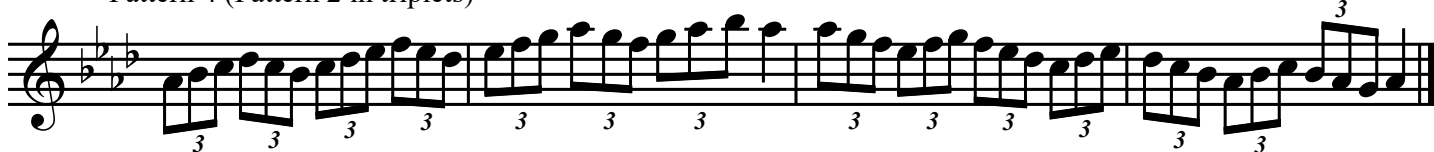
Pattern 2



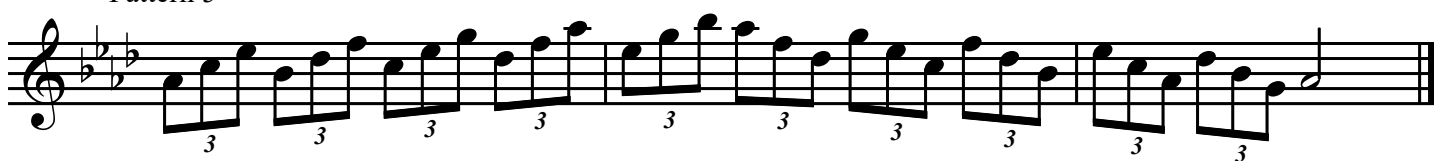
Pattern 3 (Pattern 1 in triplets)



Pattern 4 (Pattern 2 in triplets)



Pattern 5



Pattern 6



Pattern 7



Pattern 8



B Major Scale ( B<sup>Maj</sup>7 B<sup>Maj</sup>9 B<sup>6</sup><sub>9</sub> B<sup>6</sup> B<sup>Maj</sup>13 )

Pattern 1



Pattern 2



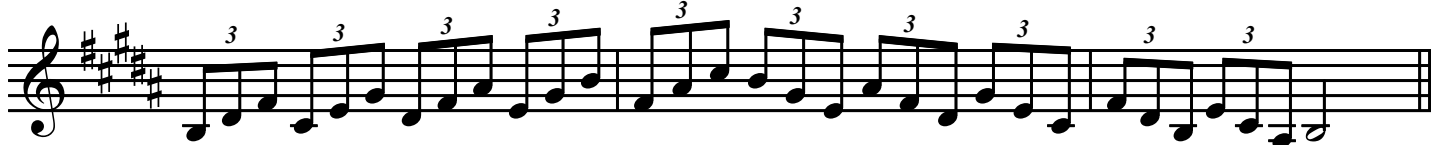
Pattern 3 (Pattern 1 in triplets)



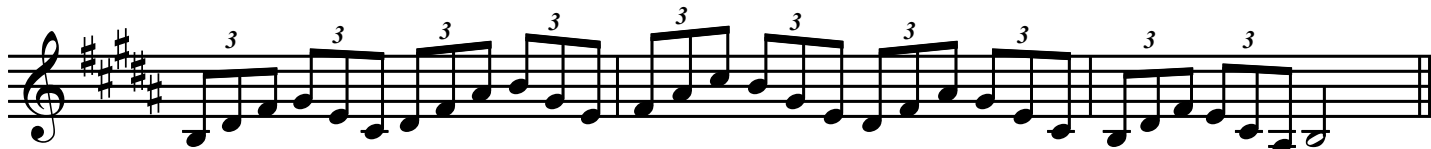
Pattern 4 (Pattern 2 in triplets)



Pattern 5



Pattern 6



Pattern 7



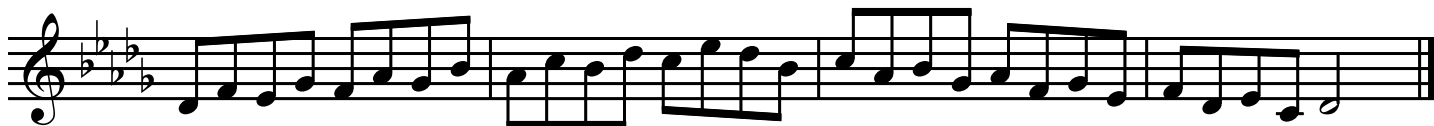
Pattern 8



Db Major Scale ( DbMaj7 DbMaj9 Db<sup>6</sup> Db6 DbMaj13 )



Pattern 1



Pattern 2



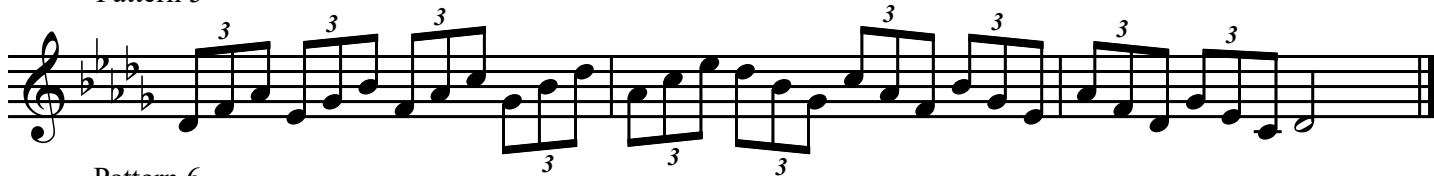
Pattern 3 (Pattern 1 in triplets)



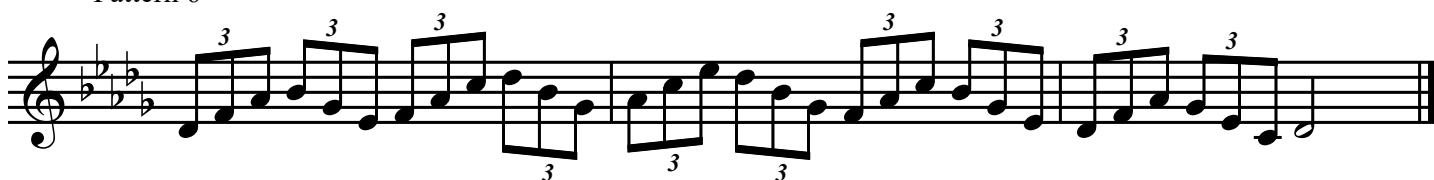
Pattern 4 (Pattern 2 in triplets)



Pattern 5



Pattern 6



Pattern 7



Pattern 8



F# Major Scale ( F#Maj7 F#Maj9 F#<sup>6</sup> F#6 F#Maj13 )

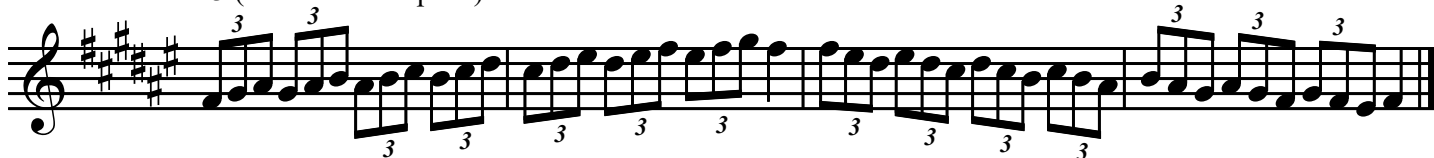
Pattern 1



Pattern 2



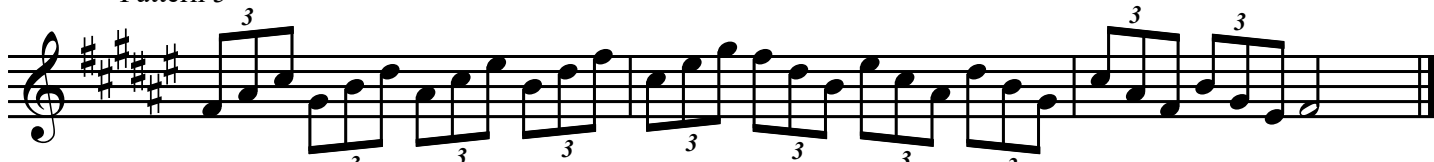
Pattern 3 (Pattern 1 in triplets)



Pattern 4 (Pattern 2 in triplets)



Pattern 5



Pattern 6



Pattern 7



Pattern 8

