

LEDGER LINE CLUB!

Learn your notes in groups:

A. The "outer C's":

© 1969, 1984 General Words and Music Company
C 4

© 1969, 1984 General Words and Music Company
C 39

B. Two that must be memorized:

© 1969, 1984 General Words and Music Company
E 6

© 1969, 1984 General Words and Music Company
A 37

The rest simply are 'related' to the notes shown above, or are 'related' to Middle C.

'Related' to the notes shown above:

© 1969, 1984 General Words and Music Company
C 4

© 1969, 1984 General Words and Music Company
B 3

© 1969, 1984 General Words and Music Company
C 39

© 1969, 1984 General Words and Music Company
D 40

© 1969, 1984 General Words and Music Company
E 6

© 1969, 1984 General Words and Music Company
D 5

© 1969, 1984 General Words and Music Company
A 37

© 1969, 1984 General Words and Music Company
B 38

'Related' to Middle C:



© 1969, 1984 General Words and Music Company
25
Middle C



© 1969, 1984 General Words and Music Company
24
B

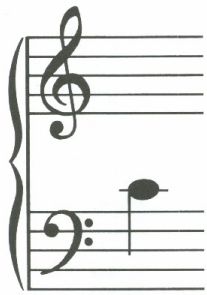


© 1969, 1984 General Words and Music Company
23
A



© 1969, 1984 General Words and Music Company
G

'Related' to Middle C:



© 1969, 1984 General Words and Music Company
18
Middle C



© 1969, 1984 General Words and Music Company
19
D



© 1969, 1984 General Words and Music Company
20
E



© 1969, 1984 General Words and Music Company
21
F

It's a good idea to memorize these two from above:



© 1969, 1984 General Words and Music Company
21
F



© 1969, 1984 General Words and Music Company
22
G