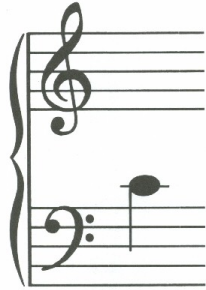


ONE MINUTE CLUB!

Learn your notes in groups:

A. The two Middle C's:



© 1969, 1984 General Words and Music Company

18

Middle C

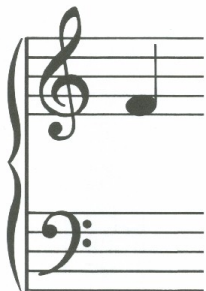


© 1969, 1984 General Words and Music Company

25

Middle C

B. The spaces of the Treble Clef spell F-A-C-E:



© 1969, 1984 General Words and Music Company

28

F



© 1969, 1984 General Words and Music Company

30

A



© 1969, 1984 General Words and Music Company

32

C



© 1969, 1984 General Words and Music Company

34

E

C. The spaces of the Bass Clef make "All Cows Eat Grass":



© 1969, 1984 General Words and Music Company

9

A



© 1969, 1984 General Words and Music Company

11

C



© 1969, 1984 General Words and Music Company

13

E



© 1969, 1984 General Words and Music Company

15

G

D. The lines of the Treble Clef make "Every Good Boy Does Fine":



© 1969, 1984 General Words and Music Company

E

27

© 1969, 1984 General Words and Music Company

G

29

© 1969, 1984 General Words and Music Company

B

31

© 1969, 1984 General Words and Music Company

D

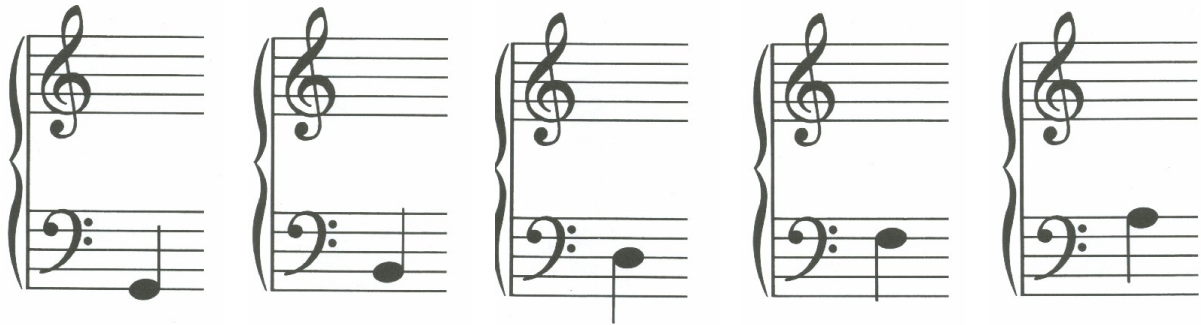
33

© 1969, 1984 General Words and Music Company

F

35

E. The lines of the Bass Clef make "Great Big Dogs From Alaska":



© 1969, 1984 General Words and Music Company

G

8

© 1969, 1984 General Words and Music Company

B

10

© 1969, 1984 General Words and Music Company

D

12

© 1969, 1984 General Words and Music Company

F

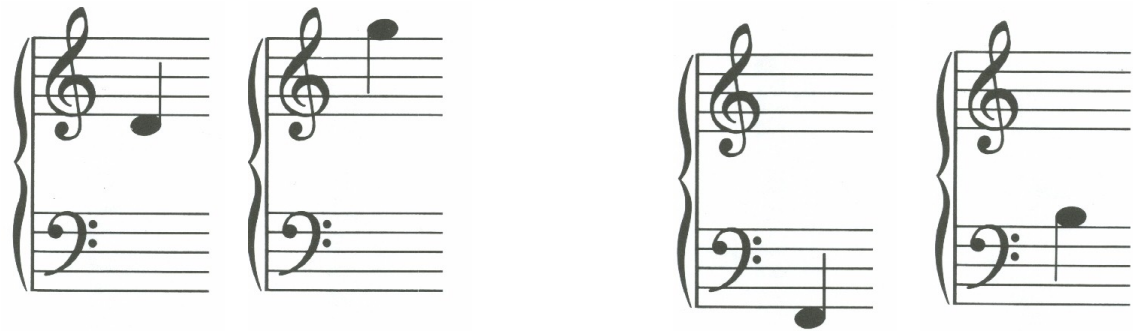
14

© 1969, 1984 General Words and Music Company

A

16

F. The outer notes make "Do Great" and "Foot-Ball":



© 1969, 1984 General Words and Music Company

D

26

© 1969, 1984 General Words and Music Company

G

36

© 1969, 1984 General Words and Music Company

F

7

© 1969, 1984 General Words and Music Company

B

17